



Seven Sea Gardens, London, E3

BUTLER & STAG



Contemporary two bedroom two bathroom fifth floor apartment within the superb Caspian Wharf development at Seven Sea Gardens.



- Two Double Bedroom Apartment
- Open-Plan Kitchen and Living Space
- Modern Development with Concierge Service
- Furnished
- Two Bathrooms
- Fifth Floor with Two Balconies
- Close to DLR Stations
- Available from 3rd June 2026

Featuring stunning views towards Canary Wharf from two south-west facing balconies, this excellent modern apartment is offered furnished and benefits from concierge service.

Located next to the Limehouse Cut and only a short walk from DLR stations, there is a supermarket, gym and coffee shop on your doorstep.

The apartment itself comprises of two double bedrooms (one with an en-suite bathroom and the other with a balcony), a main bathroom and a spacious open-plan kitchen / living-dining space with access to a further balcony.

Perfectly suited to a couple or two sharing professionals and available from 3rd June 2026.

EPC Rating B
Council Tax Band D

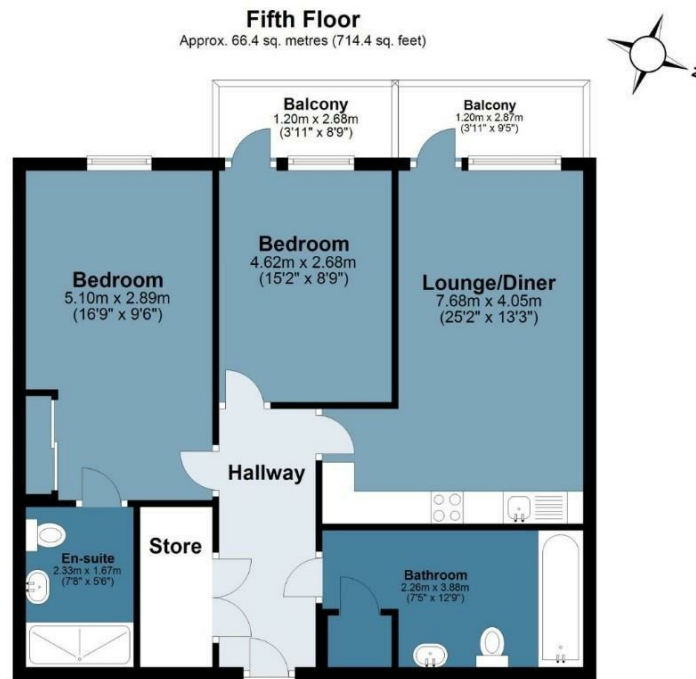




Kara Court

BUTLER & STAG

Approx. Gross Internal Area 66.4 sq. metres (714.4 sq. feet)



Measurements are approximate and for illustration purposes only. While we do not doubt the accuracy and completeness, we advise you conduct a careful independent assessment of the property to determine monetary value
© @modephoto.uk www.modephoto.co.uk

BUTLER & STAG

☎ 020 8102 1236

🏠 508 Roman Road, Bow, London, E3 5LU

✉ bow@butlerandstag.com

IMPORTANT NOTICE - These particulars have been prepared in good faith and they are not intended to constitute part of an offer or contract. We have not performed a structural survey on this property and the services, appliances and specific fittings have not been tested. All photographs, measurements, floor plans and distances referred to are given as a guide and should not be relied upon.

www.butlerandstag.uk